

Sib

# IN THE MOOD

JOE GARLAND

Solo trompette

Cl Alt

Cl Alt  
Trp  
Tén  
Bs Tb

Cl Alt  
Trp  
Tén  
Bs Tb

Cl Alt  
Trp  
Tén  
Bs Tb

Cl Alt  
Trp  
Tén  
Bs Tb

# IN THE MOOD

Cl & Sop  
sib

JOE GARLAND

Solo trompette

Cl Alt

1

2

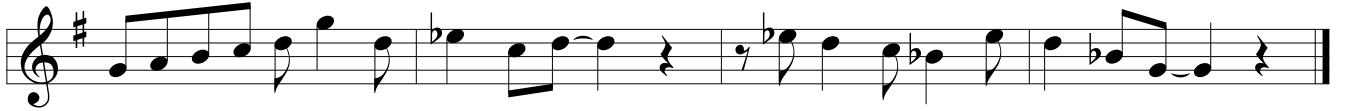
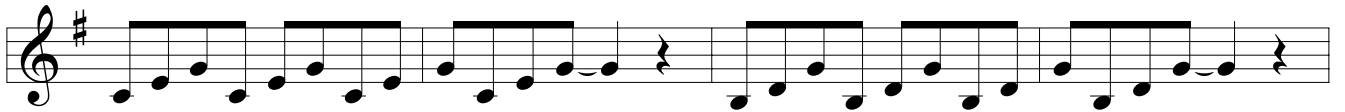
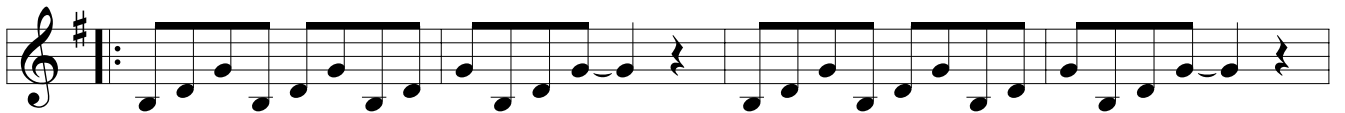
Trp

# IN THE MOOD

JOE GARLAND

Solo trompette

Trp 



# IN THE MOOD

Alto  
mib

JOE GARLAND

Solo trompette

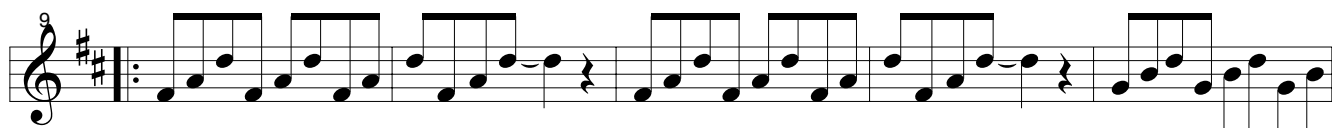
Cl Alt




The first staff of music is for the solo trumpet part, labeled 'Cl Alt'. It begins at measure 1 with a treble clef, a key signature of two sharps (F# and C#), and a common time signature. The melody starts with a quarter note G4, followed by quarter notes A4, B4, and C5, then a quarter rest, and continues with a series of eighth and quarter notes.



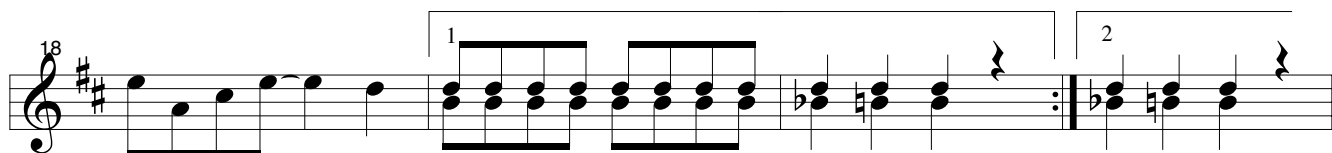
The second staff of music starts at measure 4. The melody continues with quarter notes D5, E5, and F#5, followed by quarter notes G5, A5, and B5, then a quarter rest, and continues with a series of eighth and quarter notes.



The third staff of music starts at measure 8. The melody continues with quarter notes C6, B5, and A5, followed by quarter notes G5, F#5, and E5, then a quarter rest, and continues with a series of eighth and quarter notes.



The fourth staff of music starts at measure 14. The melody continues with quarter notes D5, C5, and B4, followed by quarter notes A4, G4, and F#4, then a quarter rest, and continues with a series of eighth and quarter notes.



The fifth staff of music starts at measure 18. The melody continues with quarter notes E4, D4, and C4, followed by quarter notes B3, A3, and G3, then a quarter rest, and continues with a series of eighth and quarter notes. There are first and second endings indicated by bracketed lines above the staff.



The sixth staff of music starts at measure 22. The melody continues with quarter notes F#3, E3, and D3, followed by quarter notes C3, B2, and A2, then a quarter rest, and continues with a series of eighth and quarter notes.



The seventh staff of music starts at measure 26. The melody continues with quarter notes G2, F#2, and E2, followed by quarter notes D2, C2, and B1, then a quarter rest, and continues with a series of eighth and quarter notes.



The eighth staff of music starts at measure 30. The melody continues with quarter notes A1, G1, and F#1, followed by quarter notes E1, D1, and C1, then a quarter rest, and continues with a series of eighth and quarter notes.

# IN THE MOOD

Tén

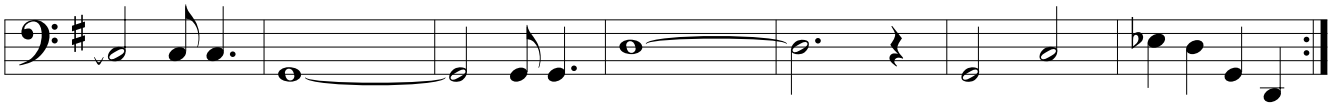
JOE GARLAND



# IN THE MOOD

Bs Tb  
sib

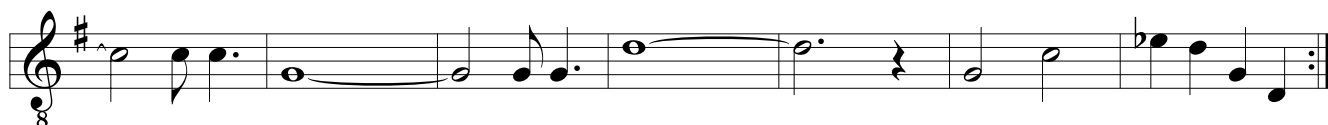
JOE GARLAND



# IN THE MOOD

Bs Tb  
ut

JOE GARLAND



# IN THE MOOD

JOE GARLAND

Solo trompette

Cl Alt



Cl Alt

Trp

Tén

Bar



Cl Alt

Trp

Tén

Bar



Cl Alt

Trp

Tén

Bar



Cl Alt

Trp

Tén

Bar

